



# FSC DECK / WALL JET

**MODEL NUMBER**  
**DJ-125 / WJ-125**  
**DJ-187 / WJ-187**  
**DJ-250 / WJ-250**  
**DJ-375 / WJ-375**

## DESCRIPTION

THE DECK / WALL JET IS DESIGNED TO BE CAST IN A DECK OR WALL OF A POOL OR FOUNTAIN. TRAJECTORY OF THE NOZZLE IS ORIENTATED 45° FROM THE HORIZONTAL PLANE TO WHICH IT IS INCASED. WITH A BRASS BALL SWIVEL 5° OF ADJUSTABILITY IS POSSIBLE FROM 45° PRESET TO MAXIMIZE THE FEET OF HEAD OR LINEAR THROUGH.

## SPECIFICATIONS

FINISH: SHALL BE NATURAL BRONZE, AND NATURAL BRASS.

JET: SHALL BE A 3/8" NPT BRASS PRECISION NOZZLE (INTERCHANGEABLE).

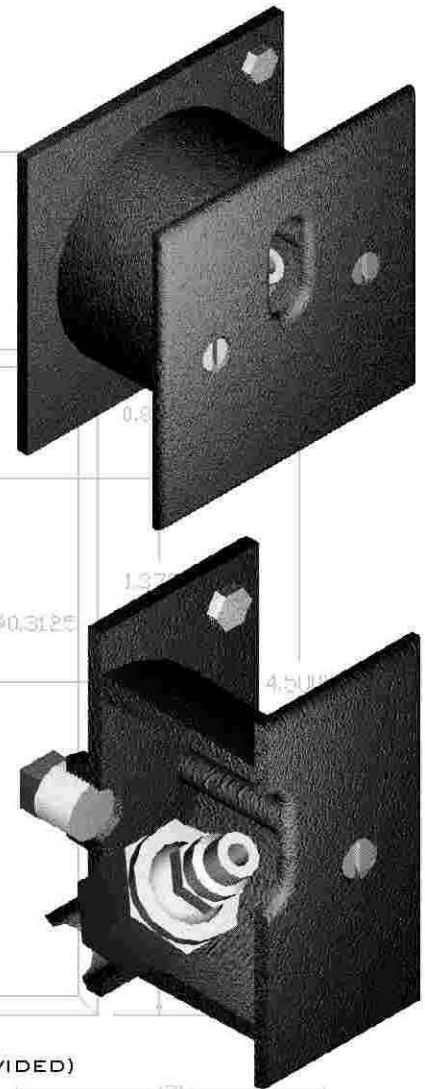
MODEL NUMBER	ORFICE DIAMETER
DJ-125 / WJ-125	0.125"
DJ-187 / WJ-187	0.1875"
DJ-250 / WJ-250	0.25"
DJ-375 / WJ-375	0.375"
DJ = DECK JET	WJ = WALL JET

ADJUSTABILITY: BALL AND SOCKET CONSTRUCTION SWIVEL WITH BRASS LOCKING NUT, ALLOWS FOR 5° OF ADJUSTABILITY FROM THE 45° ANGLE.

INLET: 3/8" FNPT (3/8" MNPT x 1/2" SLIP PVC ADAPTOR, PROVIDED)

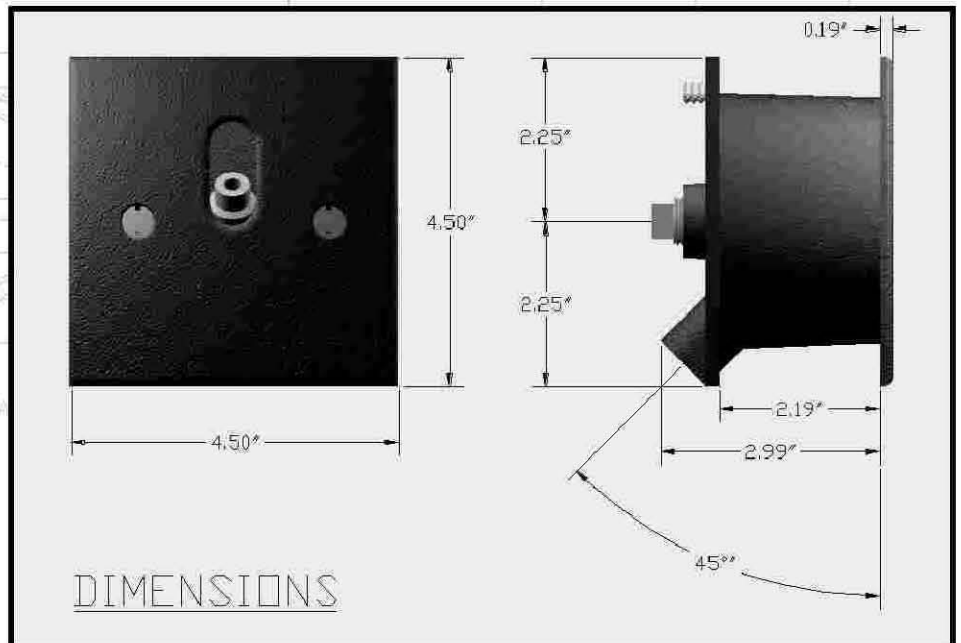
OUTLET: 3/8" FNPT

DRAIN: 3/8" FNPT (3/8" PLUG PLUS 3/8" MNPT x 1/2" SLIP PVC ADAPTOR, PROVIDED)



## MATERIAL SPECIFICATIONS

NICHE:	BRONZE
NICHE GROUNDING FASTENER:	STAINLESS STEEL
FACE PLATE:	BRONZE
FACE PLATE FASTENERS:	BRASS
NOZZLE:	BRASS
SWIVEL:	BRASS
PLUG:	BRASS/BRONZE



## DIMENSIONS